

# UNIQ

ACCESSORY

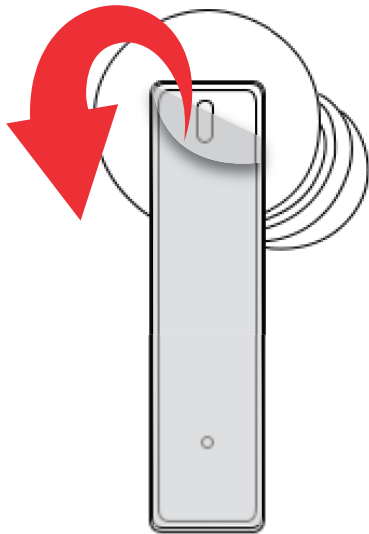
## UNIQ BUDS PRO

[www.uniqaccessory.com](http://www.uniqaccessory.com)

UNIQ Buds Pro TWS Bluetooth Earbuds are perfect for anyone who likes freedom of movement, without excess cables. The design is stylish and the music quality is premium.



The UNIQ Buds Pro earplugs come with a handy charging case in a matching colour. Thanks to its ergonomic design, it fits perfectly in your ears and gives you the ultimate wearing experience.

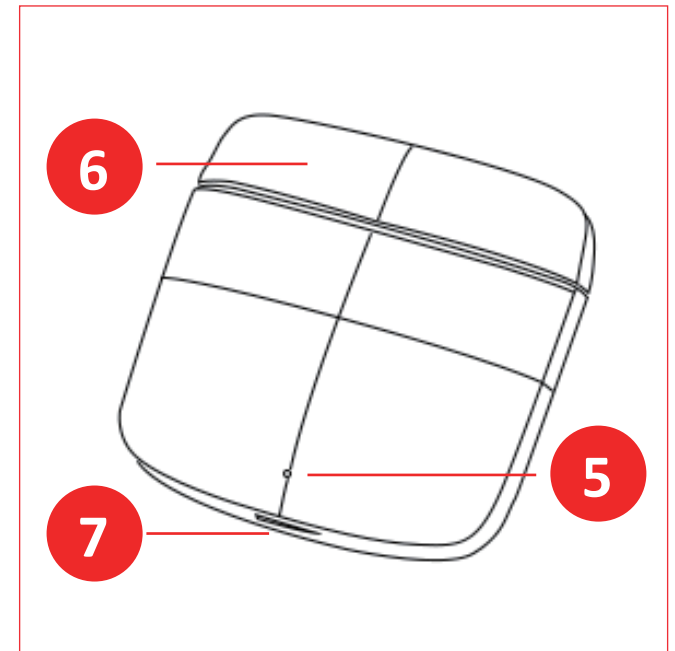
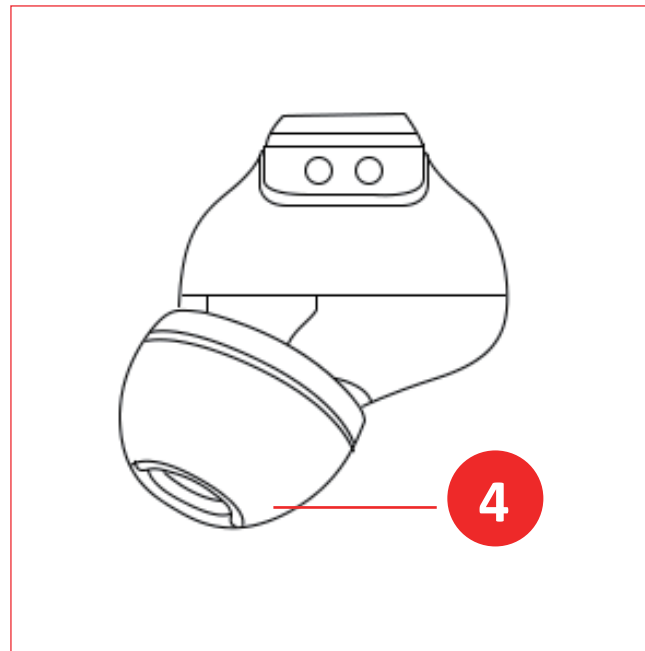
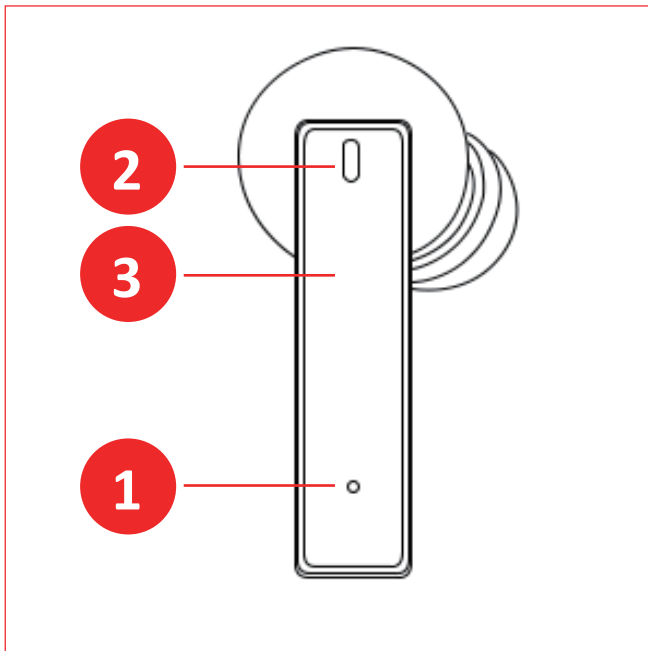


Please remove the sticker on the back cover of the earphones for better performance.

**UNIQ**  
ACCESSORY

## GET TO KNOW THE BUDS PRO

3



- 1- Microphone
- 2- Indicator light 1
- 3- Touch area
- 4- Ear cap

- 5- Indicator light 2
- 6- Charging case
- 7- Charging port (USB-C)

# BUDS PRO

## HOW TO TURN ON AND PAIR THE UNIQ BUDS PRO WITH YOUR DEVICE

### STEP 1

Take out the UNIQ Buds Pro from the charging case carefully. Once out, you will hear the sound "Power On" and the two buds flash blue lights quickly.

*If the buds don't turn on, please press and hold the touch area for 3 seconds.*

### STEP 2

Turn on the bluetooth on your device and look for UNIQ Buds Pro. Once you see the correct name in the list click to connect. It will take two seconds to connect.

### STEP 3

After pairing for the first time, UNIQ Buds Pro will automatically connect with your device. This should happen after you take the buds out of the case.

After being taken out from the charging case, the earphones will be paired automatically. If not, please follow the steps above.

# PAIRING

## HOW TO USE THE UNIQ BUDS PRO

### VOICE ASSISTANT

Touch the left or right earphone three times gently to activate the voice assistant.

This function works with some voice assistant

### PHONE CALLS

*Answering a call*  
Touch the left or right bud once.

*Hanging up*  
Touch the left or right bud twice.

*Rejecting a call*  
Press the left or right bud for 2 secs.

### LISTNING TO MUSIC

*Play/Pause:* Touch the left or right bud twice.

*Next song:* Press and hold the touch area of right bud for 2 seconds.

*Previous song:* Press and hold the touch area of left bud for 2 seconds.

*Volume up/down:* Touch the right or left bud once

Put the earphones into the charging case and the earphone will display a red light while charging.

*Please use the usb-c cable included to charge your UNIQ Buds Pro.*

# CHARGER

## SPECIAL INSTRUCTIONS

### RESETTING THE BUDS

Delete the bluetooth name which you got connected before from your phone.

Touch the left and right earphones for 5 times respectively. You will see red and blue light flash for 2 seconds at the same time. The earphones will turn on. At the meantime, the earphones are waiting for pairing. Within 10 minutes, it will finish connecting and the earphones will flash blue light.

### SPECIAL CASES

Apple iPhones and some Android phones support volume control, but for some Android phones, you can only adjust the volume of the earphone.

When you adjust the volume of the earphones, you are also adjusting the volume of your phone.

Do not touch the touch area while holding the earphones.

### PRECUATIONS

Try to listen at low volume. Listening at high volume for an extedn period may result in permanent damage to your hearing.

Keep your earphones and accessories out of reach of children. Children should use the earphones under the supervision of adult.

Use and store the buds between -15 and +50 degrees celius. Don't charge where temperature is below 0 degree C.

Do not expose the earphone to water, moist, dust and long periods of direct sun light.

To avoid damaging your UNIQ Buds Pro, do not disassemble or tamper with them. And do not insert any material into them.

**IMPORTANT!**

## PROMPTS AND INDICATORS

7

VOICE PROMPTS		BUDS INDICATOR		CHARGING CASE	
Power on	“ power on”	No pairing	“Red and blue lights”	Charging	When charging, the indicator light will gradually become bright or dim.
Power off	“ power off”	Paired buds	“Blue light”	Red light	5-35% charged
Clear all pairings	“ power off”	Paired device	“Lights off”	Yellow	35-70% charged
Battery low	“ battery low”	Power on	“Red and blue (1sec)”	Green	70-100% charged
Pairing	“ pairing”	Power off	“Lights off”	Full	Green light will turn off after 8 seconds
Pairing success	“ connected”	Play	“Lights off”	Shortage	While 5% battery, the red light will flash quickly for 4 seconds and then light off.
Disconnected	“ disconnected”	Pause	“Lights off”		
Volume maximum	“ DuDu”	Standby	“Lights off”		
Volume minimum	“ DuDu”	Incoming call	“Blue light every 3 sec”		
		Calling	“Lights off”		
		Charging	“Red light on”		
		Fully charged	“Lights off”		

When the charging case is charged or connected with the cable to a charger, the buds will starting charging one you put them in the charging case.

# INDICATORS

# TECHNICAL



1. Premium TWS Earbuds with built-in microphone
2. Fashionable Design Earbuds and Charging Case
3. Clear sound and deep bass
4. Ergonomic design for an ultimate wearing experience
5. Bluetooth version: 5.0
6. Bluetooth range: up to 10 meters
7. Earphone charging time: 1.5 hours
8. Charging box charging time: 2 hours
9. Charging case: 500 mAh
10. Talk time: 5 hours
11. Music time: 5 hours
12. Stand-by: 50 hours
13. Charging Port: USB Type-C

Model	UNIQ Buds Pro
EAN	8719273160886

*visit:*

**[www.uniqaccessory.com](http://www.uniqaccessory.com)**

*mail to:*

**[sales@uniqaccessory.com](mailto:sales@uniqaccessory.com)**